

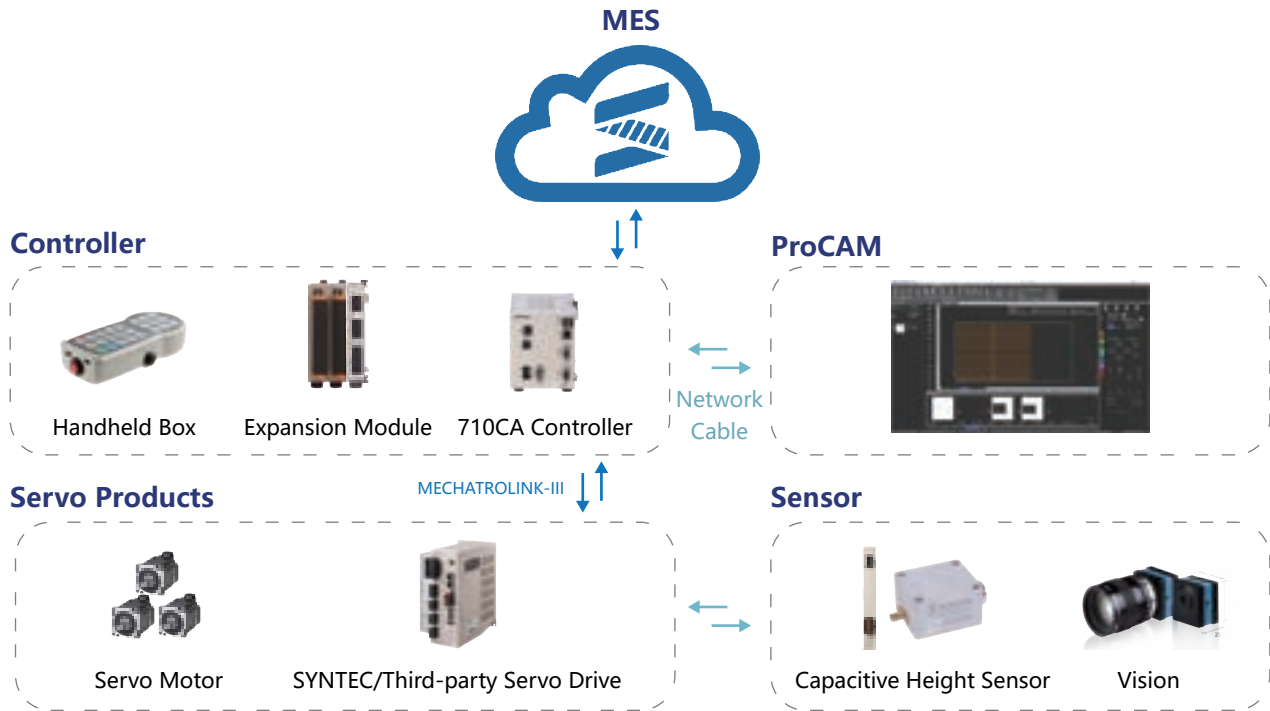


**SYNTEC LASER CUTTING
CONTROL SYSTEM
SOLUTIONS**





Laser Sheet Cutting Product Structure



Key Features

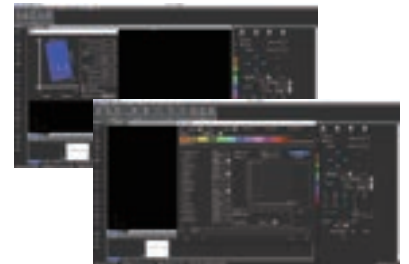
ProCAM

- Supports drawing, editing, and direct processing
- Supports automatic nesting, scrap management
- Supports lead-in/lead-out, micro-joints, fly cutting, common edge, and other process



Built-in cutting industrial

- Can modulate laser source power based on speed, distance, time, and supports most commercially available laser sources
- Supports height following, multi-level piercing, intelligent edge finding, frog jumping, high-speed micro-joints



Applications



Non-metal sheet cutting

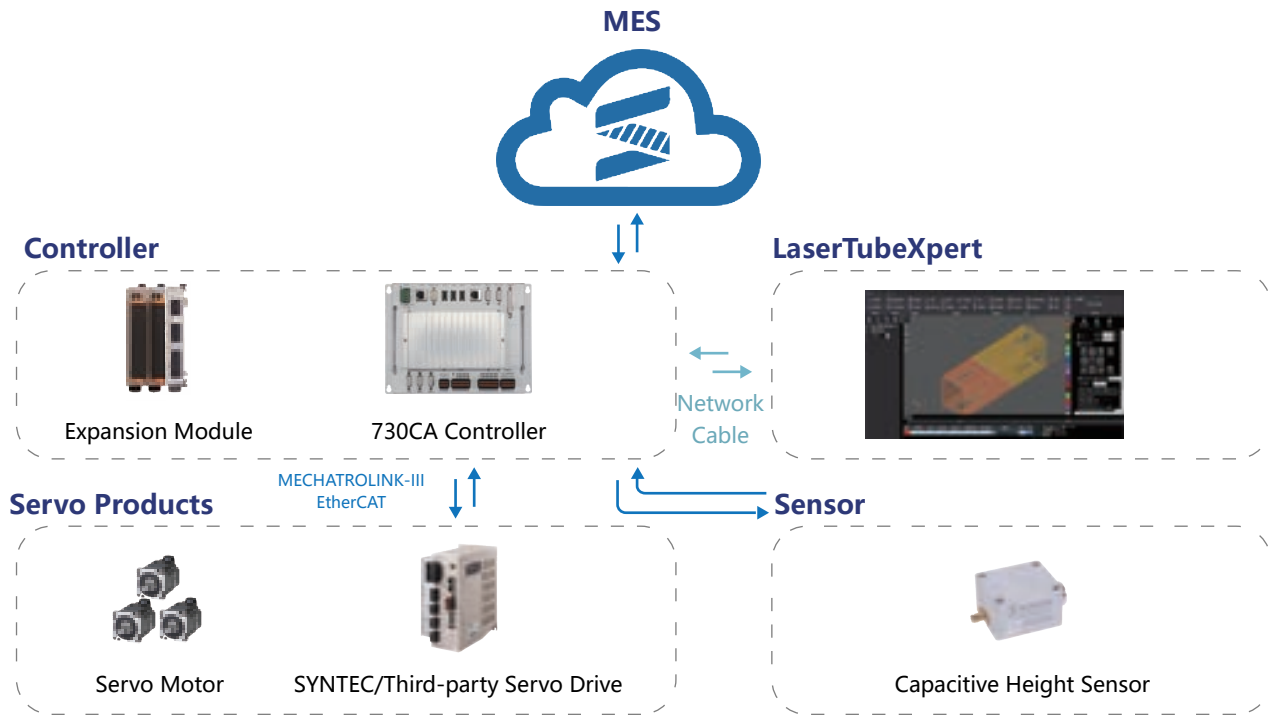
- Widely used in die cutting, advertising, and other non-metal material processing industries
- Supports CO2 laser control and contact height sensor
- Capable of processing wood, acrylic sheets, fabrics



Metal sheet cutting

- Widely used in metal sheet industry such as electrical cabinets, chassis
- Supports various brands of commercial laser source
- Capable of processing stainless steel, carbon steel, aluminum, copper, and other metal materials

Laser Tube Cutting Product Structure



Key Features

LaserTubeXpert

- Supports round , square , oval , waist-shaped tubes etc.
- Supports drawing, editing, and direct processing
- Supports automatic close arrangement and common edges of multiple pieces

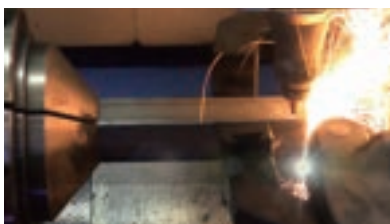


Built-in laser bevel tube cutting industrial

- Supports R corner, beveling process, and dynamic tool length compensation
- Support position and follow-up control mode switching, square tube corner following
- Support single chuck and double chuck architecture
- Supports mechanism chain correction function and five-axis tool tip point control (RTCP)



Applications



Single chuck pulling tube

- Widely used in processing scenarios for mass production of single parts such as round tubes, square tubes, and oval tubes.
- Instead of sawing and drilling, a single machine completes two processes, improving the efficiency of parts manufacturing.

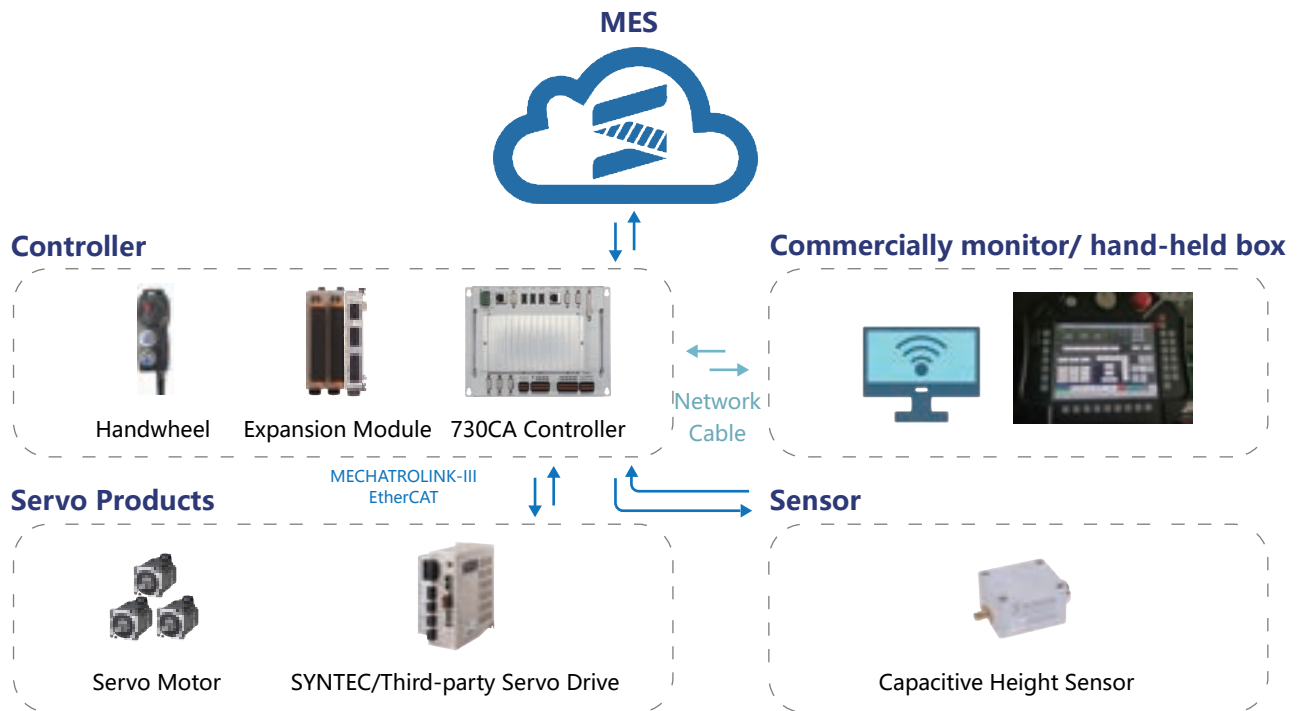


Bevel tube cutting

- Widely used in tube fittings splicing and processing applications in fitness equipment, furniture industry, etc.
- Supports bevel processing of various tube shapes such as round, square, elliptical, beaded , etc., to improve the strength of the finished product in the next welding process.



Laser Five-axis Cutting Product Structure



Key Features

Package height adjustment solution

- Provides SYNTEC package height adjustment solution
- Supports piercing function, real-time follow-up height control



Convenient teaching function

- Dialog-based program design operation, low programming threshold, quick start
- Supports flat DXF import drawing/online drawing function
- Supports offline programming processing



Applications



Non-metal five-axis

- Widely used in processing applications such as automotive interior parts, bumpers, dental membranes, VR glasses, helmets, etc.
- Replaces stamping forming processes, adapts to flexible automated production lines, reduces part manufacturing costs



Metal five-axis cutting

- Widely used in automotive sheet metal parts, AB columns, household appliances, sports equipment, and other parts processing
- Capable of processing high-strength thermoformed materials, reducing mold costs, meeting the needs of small-batch diversified processing

Specification

710CA Controller

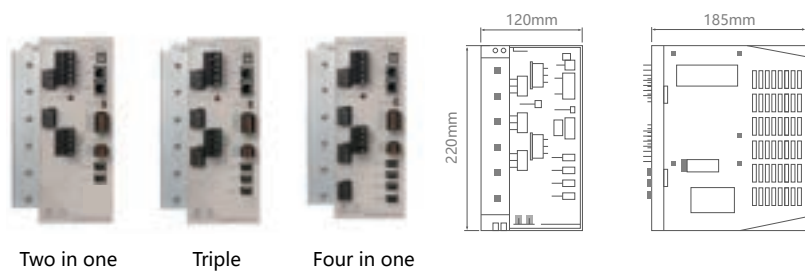


730CA Controller



System	710CA	730CA
Monitor	VGA	
USB	2	3
Network	10/100 Mbps	
Communication Protocol	RS485, Modbus, TCP, EtherNet/IP	
Servo Interface	Mechatrolink-III/EtherCAT	
Control Axes	Standard 5 axes(max.16 axes)	
External Interface	RJ-45, USB, DSUB, MPG	
I/O bit	Up to 4096 points	
Input Voltage	DC24V 1A	

Series Servo Driver



System	SMD-22B	SMD-23B	SMD-24B
Control Axes	2	3	4
Support Encoder Model	Nikon-Tamagawa-Sankyo-Panasonic-Hiwin		
I/O bit	21 / 20		
Servo Interface	Mechatrolink-III/EtherCAT		
Input Voltage	220V		

TAIWAN

Taiwan (Hsinchu)

SYNTEC Technology Co., Ltd
ADD : No.25, Yanfa 2nd Rd., East Dist.,
Hsinchu City 300, Taiwan (R.O.C.)
TEL : +886-3-6663553
FAX : +886-3-6663505
EMAIL : sales@syntecclub.com.tw

Taichung

SUN-CNC Co., Ltd
ADD : No. 22, Lane 428, Section 1, Fengyuan
Boulevard, Fengyuan District
TEL : +886-4-25337731
TAX : +886-4-25349224

TANLU-CNC Co., Ltd

ADD : No. 42, Jingming Road, Xitun District,
Taichung City, Taiwan (R.O.C.)
TEL : +886-4-23102628
TAX : +886-4-23102636

Tainan

ADD : No. 218, Denan Road, Rende District,
Tainan City, Taiwan (R.O.C.)
TEL : +886-6-2795707
TAX : +886-6-2795705

CHINA

Jiangsu

SYNTEC TECHNOLOGY(Suzhou)CO.,Ltd
ADD : Building B, No.9 Chunhui Road,Suzou Industrial
Park, China
TEL : 0512-69008860
FAX : 0512-69246029

SYNTEC TECHNOLOGY(Suzhou)CO.,Ltd WuXi Office

ADD : B906, Yuye Network Building, 68 Exploration
Road, Hulishan District, Wuxi City, Jiangsu Province,
China
TEL : 15295664580

SYNTEC TECHNOLOGY(Suzhou)CO.,Ltd Changzhou Office

ADD : Room 2217, Yatai Fortune Center, No. 1
Huayuan Street, Hutang Town, Wujin District,
Changzhou City, Jiangsu Province, China
TEL : 18168828572

SYNTEC TECHNOLOGY(Suzhou)CO.,Ltd XuZhou Branch

ADD : Room 1503, South of Territorial Sea Office
Building, No. 66 Kumpeng Road, Xuzhou Economic
Development Zone, Jiangsu Province, China
TEL : 13656201020

SYNTEC TECHNOLOGY(Suzhou)CO.,Ltd NanJingBranch

ADD : Room 712, Research Building 1, Lianggang
Park, 117 Suyuan Avenue, Jiangning District, Nanjing
City, Jiangsu Province, China
TEL : 025-52717702
FAX : 025-52717710

SYNTEC TECHNOLOGY(Suzhou)CO.,Ltd NanTong Branch

ADD : Room T3-1301, No. 108, Gangzha District,
North Street, Nantong City, Jiangsu Province, China
TEL : 0513-89077025
FAX : 0513-89072057

SYNTEC TECHNOLOGY(Suzhou)CO.,Ltd NanTong Branch Yanchen Office

ADD : Room 401, building 13, phase 9, Zhongnan
Century City, Yandu District, Yancheng City, Jiangsu
Province
TEL : 18625235150

Shaanxi

SYNTEC TECHNOLOGY(Suzhou)CO.,Ltd XiAn Branch

ADD : Room 1, 1328, Building 4, Yicui Garden I
Dihua, No. 10, South Tangyan Road, Xi'an
High-tech Zone
TEL : 029-88287423

SYNTEC TECHNOLOGY(Suzhou)CO.,Ltd BaoJi Office

ADD : Room 1702, Unit 3, Building 8, Dongling Xinshiji,
Binhe North Road, Jintai District, Baoji, Shaanxi
Province, China

AROUND THE WORLD

Malaysia

MYSYNTEC TECHNOLOGY SDN BHD
ADD : 16, Jalan Astana 1F, Bandar Bukit Raja, 41050
Klang, Selangor, Malaysia.
TEL : +603-33115887
EMAIL : sales.malaysia@syntecclub.com

Thailand

MYSYNTEC TECHNOLOGY SDN BHD
ADD : 78/38 Kheha Romkiao Rd., Khlong Song Ton Nun,
Lat Krabang Bangkok, 10520
TEL : +662-006-5738

Vietnam

SYNTEC VIET NAM TECHNOLOGY CO., LTD
ADD : 3F, No. 36, A4 Street, Ward 12, Tan Binh District,
Ho Chi Minh City, VietNam
TEL : +84-938332829
FAX : +84-2822535556
EMAIL : andyngo@vnsyntec.com.vn

India

SYNTEC TECHNOLOGY INDIA PVT.LTD

ADD : Champaka building, P-6C,2nd floor, peenya industrial
area Near peenya police station Bangalore-560058
TEL : +91-9916146577
E-mail : raghavendra.naik@syntecclub.com

Turkey

SYNTEC TEKNOLOJİ LTD (Istanbul)

ADD : Küçükbakkalkoy Mah. Vedat Günyol Cd. D.2
No:1 D:1502 Flora Residence.34750 Atasehir/Istanbul, Türkiye
TEL : +90-216-2662475

USA

USA SYNTEC ECHNOLOGY, INC (South California)

ADD : 2841 Saturn St, #D, Brea, CA 92821
TEL : +1800-851-0187
EMAIL : info@syntecamerica.com

Korea

AISYNTECH (Service Partner)

ADD : 312Ho 103Dong 88, Sinwon-ro, Yeongtong-gu, Suwon-si,
Gyeonggi-do, 16681, Rep. of KOREA
TEL : +82 70-8615-1134
EMAIL : thetechtv100@gmail.com

Guangdong

SYNTEC TECHNOLOGY(Suzhou)CO.,Ltd GuangDong
Branch
ADD : Factory 201or 301, Building A, No.10 Nanjiang
Third Road, Zhuijiang Street, Nansha District, Guangzhou
City,
TEL : 020-39089367
FAX : 020-39089791

SYNTEC TECHNOLOGY(Suzhou)CO.,Ltd DongGuan Branch

ADD : 0769-81661ing 1, Mobile Group, No. 522, Zhen
'an East Road, Chang 'an Town, Dongguan City,
Guangdong Province, China
TEL : 0769-81660318

SYNTEC TECHNOLOGY(Suzhou)CO.,Ltd GuangZhou Branch

ADD : Room 404, Building 2, Seven Friendship Building
No. 8 Luojiaou Section, Fuyi Road, Dalong Street,
Panyu District, Guangzhou City, Guangdong Province
TEL : 020-34583040
FAX : 020-34583220

SYNTEC TECHNOLOGY(Suzhou)CO.,Ltd ChangPing Branch

ADD : Floor 5, Huilong Building, No. 8, Zhanqian 1st
Road, Banshi Village, Changping Town, Dongguan City,
Guangdong Province, China
TEL : 0769-82826802
FAX : 0769-82826820

SYNTEC TECHNOLOGY(Suzhou)CO.,Ltd ShenZhen Branch

ADD : 406, Block E, Haowei new material industrial
park, No. 8, Qinglan 1st Road, Zhukeng community,
Longtian street, Pingshan District, Shenzhen,
Guangdong
TEL : 0755-84320380
FAX : 0755-84559490

SYNTEC TECHNOLOGY(Suzhou)CO.,Ltd JiangMen Branch

ADD : Room 02, 7th Floor, Torch Building, Hi-Tech
Zone, 288 Jinou Road, Jianghai District, Jiangmen City,
Guangdong Province, China
TEL : 0750-3762143

Henan

SYNTEC TECHNOLOGY(Suzhou)CO.,Ltd LuoYang Branch

ADD : Room 704, Runsheng Building, Intersection of
Heluo Road and Sanshan Road, Hi-Tech Zone, Luoyang,
Henan Province, China
TEL : 0379-65110352
FAX : 0379-65110352

SYNTEC TECHNOLOGY(Suzhou)CO.,Ltd ShiJiaZhuang Office

ADD : 4-3-801, Rey Community, No. 8 Huaxing Road,
Qiaoxi District, Shijiazhuang City, Hebei Province, China
TEL : 18622728669
FAX : 0379-65110352

Fujian

SYNTEC TECHNOLOGY(Suzhou)CO.,Ltd XiaMen
Branch
ADD : Floor 3, No. 2, Jixiang West Road, Xinmin Town,
Tongan District, Xiamen City, Fujian Province
TEL : 0592-7191904
FAX : 0592-7220536

Zhejiang

SYNTEC TECHNOLOGY(Suzhou)CO.,Ltd HangZhou Branch

ADD : 1202, Unit 2, Building 1, Dikai Building, No.471
Jincheng Road, Xiaoshan District, Hangzhou City,
Zhejiang Province, China
TEL : 0571-82751187

SYNTEC TECHNOLOGY(Suzhou)CO.,Ltd HangZhou Branch Jinhua Office

ADD : Room G204, No. 1729, Dongshi North Street,
Xinshi street, Wucheng District, Jinhua City, Zhejiang
Province
TEL : 1599-0026533

SYNTEC TECHNOLOGY(Suzhou)CO.,Ltd WenZhou Branch

ADD : 1205-3, Honghai building, Ouhai District,
Wenzhou City, Zhejiang Province
TEL : 0577-86158619

SYNTEC TECHNOLOGY(Suzhou)CO.,Ltd NingBo Branch

ADD : Room 1207, Ivy League Building, No.262, Lane
416, Zhaohui Road, Jiandong-District, Ningbo City,
Zhejiang Province, China
TEL : 0574-87750305

SYNTEC TECHNOLOGY(Suzhou)CO.,Ltd WenLing Branch

ADD : Room 509, Haocheng Service Building, No. 838,
Wanchang Middle Road, Chengdong Street, Wenling
City, Taizhou City, Zhejiang Province, China
TEL : 0576-86119106

SYNTEC TECHNOLOGY(Suzhou)CO.,Ltd YuHuan Office

ADD : Room 302, Unit 2, Building 1, Hualong Times
Square, 226 Provincial Road, Chunmen Town, Yuhuan
County, Taizhou City, Zhejiang Province, China
TEL : 13088636567

Chongqing

SYNTEC TECHNOLOGY(Suzhou)CO.,Ltd ChongQing Branch

ADD : 1007, Building 4, No.62, East Section of Taishan
Avenue, Yubei District, Chongqing
TEL : 023-67913296
FAX : 023-67634382

SYNTEC TECHNOLOGY(Suzhou)CO.,Ltd ChengDu Office

ADD : ADD : Room102, Unit 1, Building 24, Jiazaoye
Modern City, No.898, Section 2, Xingxing Road,
Dongsheng Street, Shuangliu District, Chengdu City,
Sichuan Province, China
TEL : 18302866229

Tianjin

SYNTEC TECHNOLOGY(Suzhou)CO.,Ltd TianJin
Branch
ADD : No.37, Area A, Qiao Rulifeng Garden, No.7
Waihuan West Road, Xiqing District, Tianjin, China
TEL : 022-23739192

Shandong

SYNTEC TECHNOLOGY(Suzhou)CO.,Ltd JinAn Branch

ADD : 502, Unit 3, Building 11, Luneng Kangqiao, No.
28, Sankongqiao Street, Tianqiao District, Jinan,
Shandong
TEL : 0531-85907208
FAX : 0531-85905708

SYNTEC TECHNOLOGY(Suzhou)CO.,Ltd QingDao Office

ADD : Room 1004, Unit 2, Building 14, Jinri Zidu,
Tianshan Road, Chengyang District, Qingdao,
Shandong
TEL : 18663779803

SYNTEC TECHNOLOGY(Suzhou)CO.,Ltd TengZhou Office

ADD : 13 households, row 1, Xiaokang village, Yucai
Road community, Beixin street, Tengzhou City,
Shandong Province
TEL : 15098706233

Hubei

SYNTEC TECHNOLOGY(Suzhou)CO.,Ltd WuHan Branch

ADD : 2003-2006, Building A, Optics Valley
International, Jiayuan Road, No.456 East Luoyu Road,
Hongshan District, Wuhan City, Hubei Province, China
TEL : 027-87638876
FAX : 027-87204137

Liaoning

SYNTEC TECHNOLOGY(Suzhou)CO.,Ltd ShenYang Branch

ADD : Room 1212, Tianxin Building, 17 Jianshe West
Road, Tiexi District, Shenyang City, Liaoning Province,
China, China
TEL : 18698906526

Anhui

SYNTEC TECHNOLOGY(Suzhou)CO.,Ltd ShenYang Branch

ADD : Room 1005, block B, Wanda Ginza, rongchuang
Mao, Binhu, Hefei, Anhui Province, China.
TEL : 0551-63814183
FAX : 0551-63814183



SYNTEC Technology Co., Ltd.
No.25, Yanfa 2nd Rd., East Dist.,
Hsinchu City 300, Taiwan (R.O.C.)

☎ 886-3-6663553

☎ 886-3-6663505

✉ sales@syntecclub.com.tw

Suzhou SYNTEC Equipment Co.,Ltd.
No. 9th, Chun Hui Road, Suzhou
Industrial Park, Jiangsu Province

☎ 86-512-69008860

☎ 86-512-65246029

✉ service@syntecclub.com.cn



<http://www.syntecclub.com.tw>

Copyright © SYNTEC Technologies Corp.

©2024.03_rev.1 (PRINTED IN TAIWAN)

*SYNTEC reserves the right to revise catalog information at any time without notice due to typographical errors or any errors.